



Installation Guide

For Gas Leakage Sensor Zigbee LH-801ZB

Welcome!

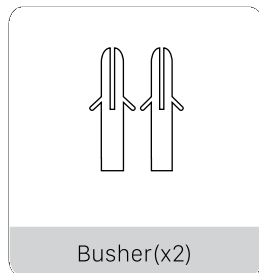
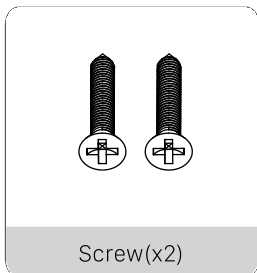
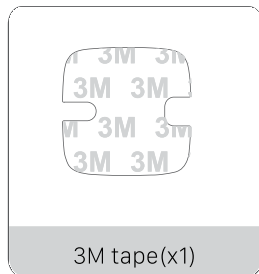
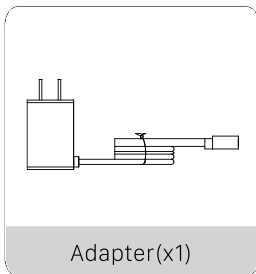
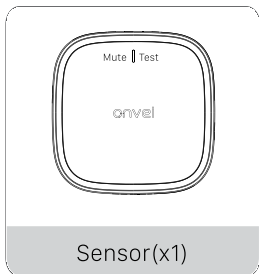
This guide will walk you through the installation of the Gas Leakage Sensor Zigbee.

Start enjoying your smart home experience today!

Content

In The Box	2
Appearance	3
Install Gas Leakage Sensor Zigbee	4
Set up Gas Leakage Sensor Zigbee	5

In The Box



Appearance

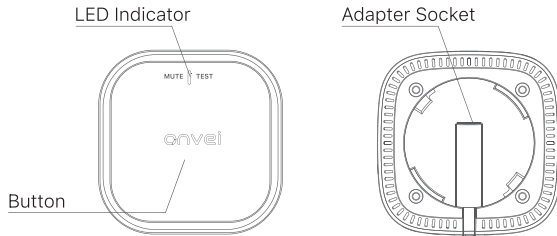


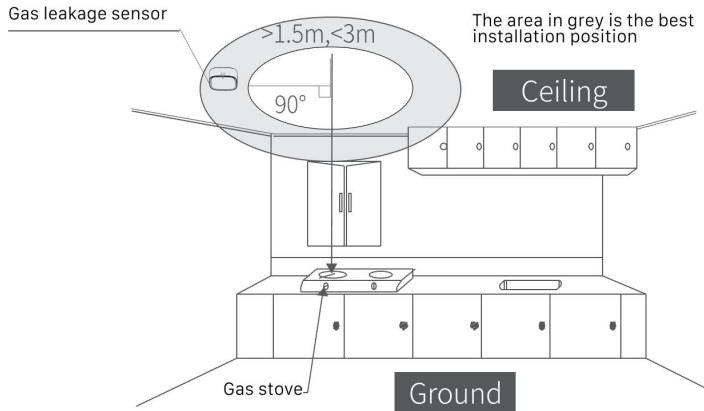
Diagram of back after removal of bracket

LED & Sound

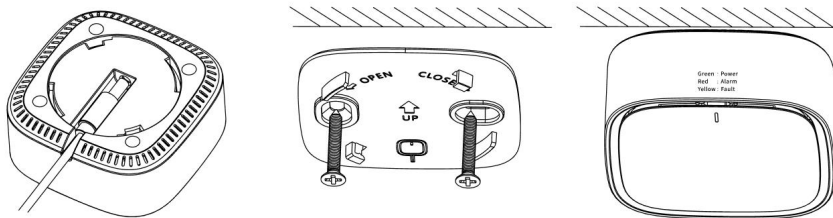
Red LED flickering	Buzzer	Gas leakage alarm
Red, green and yellow LED flash alternately	Doesn't sound	Sensors warming up
Green LED on	Doesn't sound	Normal working status
Yellow LED on	Buzzer keep sounding	Fault

Install Gas Leakage Sensor Zigbee

This product is designed for natural gas detection and should be ceiling-mounted. The recommended installation height is between 1.5 meters and 3 meters directly above the gas source.



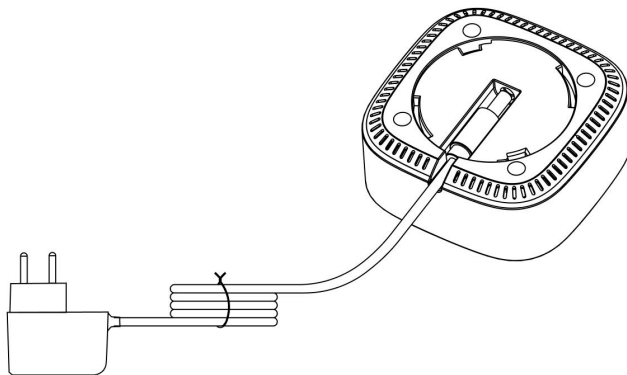
Secure the bracket to the wall using screws or 3M tape. Then, rotate the detector into the bracket in a clockwise direction. If using 3M tape, ensure the wall surface is firm, smooth, and clean to prevent the detector from falling.



Installation notice

1. It is important to ensure that the installation location is not near the gas stove to avoid false alarms caused by heat or smoke from the stove, which can affect the sensor's sensitivity.
2. Avoid exposing the product to prolonged high temperatures, water vapor, and soot. If avoidance is not possible, consider using a fan, ventilator, or other equipment to mitigate the effects.

1. Plug the provided power adapter into an electrical outlet.
2. Connect the other end of the power adapter to the Gas Leakage Sensor.
3. The Gas Leakage Sensor will turn on automatically.
4. The indicator light on the Gas Leakage Sensor will illuminate.



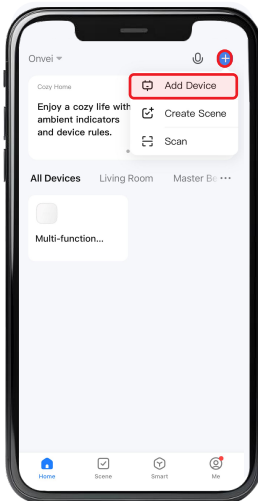
① Set up Gas Leakage Sensor Zigbee

To control the Gas Leakage Sensor Zigbee with a mobile device, install the Smart Life app. You can download the Smart Life app here.

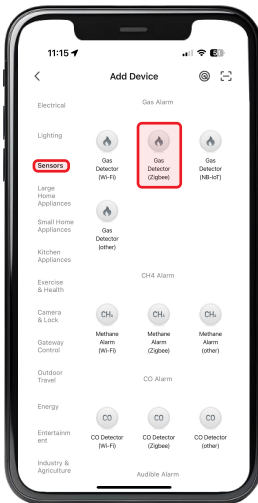


② Add Gas Leakage Sensor Zigbee

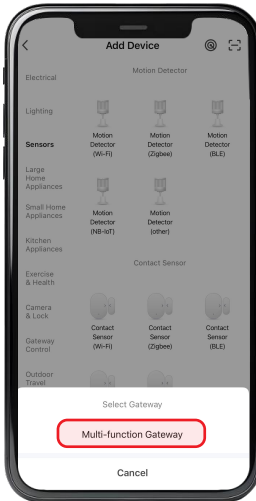
1. Launch the Smart Life app and follow the displayed instructions.
2. Add the gateway to the app according to the Multi-function Gateway Installation Guide.
3. Once the Multi-function Gateway is successfully added, click on "+" and select "Add Device".



4. Navigate to the "Sensors" category and choose "Gas Detector Zigbee".

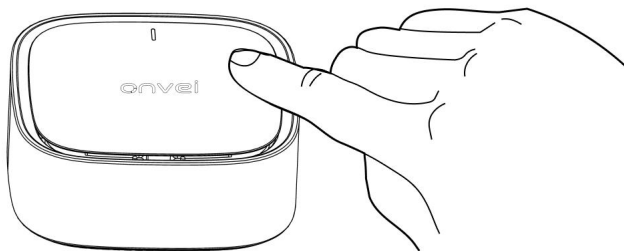


5. Select your gateway.



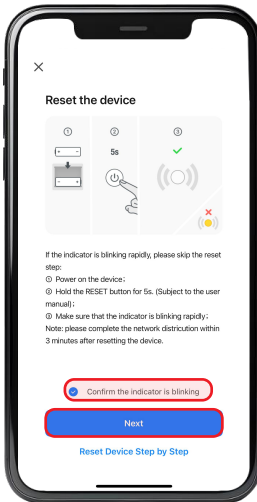
Note: The name of your gateway displayed in this section may differ from the name shown in this example image. It will display the name you have assigned to your device.

6. Connect the power to the device, The LED will flash rapidly. The device will automatically enter pairing mode.

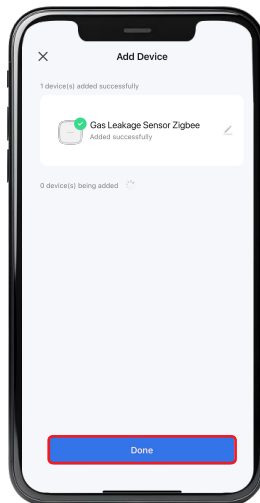
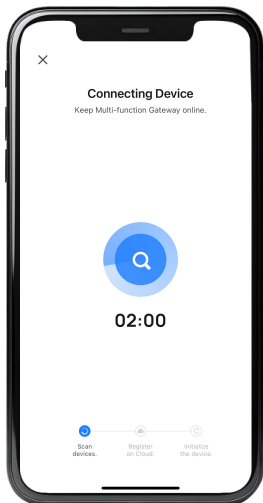


Note: Press and hold the button for 12 seconds to enter pairing mode. The blue LED will flash rapidly.

7. Select "Confirm the indicator is blinking" and click "Next".



8. Wait for the app to detect and initialize the device.
9. After the device is detected and its name appears, click "Done".



Congratulations!

Your Gas Leakage Sensor Zigbee installation is complete.

Start Enjoying Your Smart Home Experience Today!

onvei.com